

-10°C ÷ 90°C



Working pressure:
from 0 to 10 Bar (at 90°C)



Compressed air and fluids
suitable with construction
materials



Parallel gas BSPP ISO 228
from G1/8" to G3/4"

LEVER ROTATION

90° lever rotation

AVAILABILITY

- Aluminium lever on request
- Stem sealing ring in FKM (Viton) or EPDM on request



Body:

9110 & 9120: Chromed brass
CW614 UNI-EN 12164

9130: Nickel-plated brass
CW614 UNI-EN 12164

Stem: Brass

CW614 UNI-EN 12164

Nut: Brass

CW614 UNI-EN 12164

Ball: Nickel-plated brass

CW614 UNI-EN 12164

Ball seals: PTFE (Teflon)

Stem sealing ring: NBR 70

Lever: Glass fiber-charged nylon 66

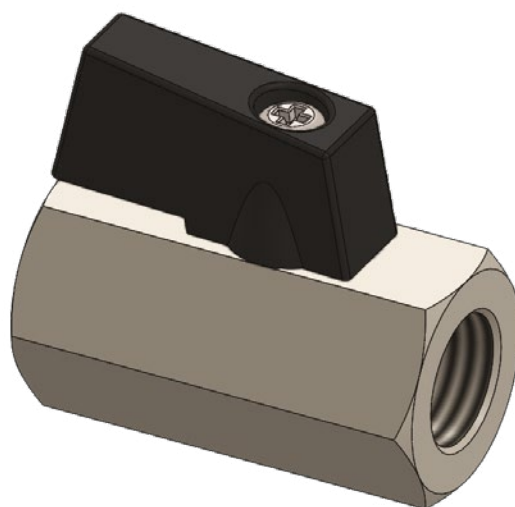


Products in compliance with
EC Regulation 1907/2006



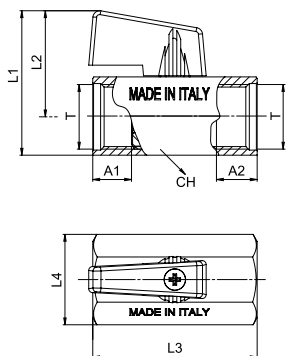
Products in compliance with
the directive EU 2015/863

VIEW - VALVE 9110



9110

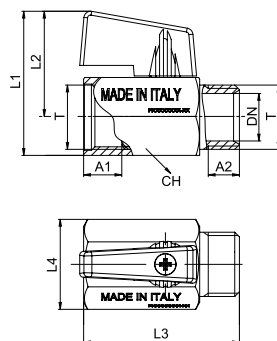
Female mini ball valve BSPP thread



CODE	T	A1	A2	L1	L2	L3	L4	CH
9110TR18	G 1/8"	8,5	7,5	37,0	27,0	39,0	23,0	20
9110TR14	G 1/4"	7,5	9,0	37,0	27,0	39,0	23,0	20
9110TR38	G 3/8"	10,0	10,0	37,0	27,0	42,0	23,0	20
9110TR12	G 1/2"	11,7	10,0	41,0	29,0	47,0	28,0	24
9110TR34	G 3/4"	12,0	11,0	47,0	32,0	54,0	35,0	30

9120

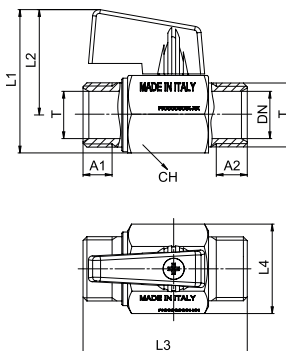
M/F mini ball valve BSPP thread



CODE	T	DN	A1	A2	L1	L2	L3	L4	CH
9120TR18	G 1/8"	6	8,5	6,0	37,0	27,0	39,0	23,0	20
9120TR14	G 1/4"	8,2	9,0	8,0	37,0	27,0	39,0	23,0	20
9120TR38	G 3/8"	12,2	10,0	8,0	37,0	27,0	40,0	23,0	20
9120TR12	G 1/2"	15,2	12,0	10,0	41,0	29,0	45,0	27,0	24
9120TR34	G 3/4"	18,2	12,0	12,0	47,0	32,0	51,0	35,0	30

9130

Male mini ball valve BSPP thread



CODE	T	DN	A1	A2	L1	L2	L3	L4	CH
9130TR14	G 1/4"	8,2	7,0	7,0	37,0	27,0	40,4	23,0	20
9130TR38	G 3/8"	12,2	7,5	8,0	37,0	27,0	42,4	23,0	20
9130TR12	G 1/2"	15,2	9,0	9,0	41,4	29,4	49,7	27,0	24

